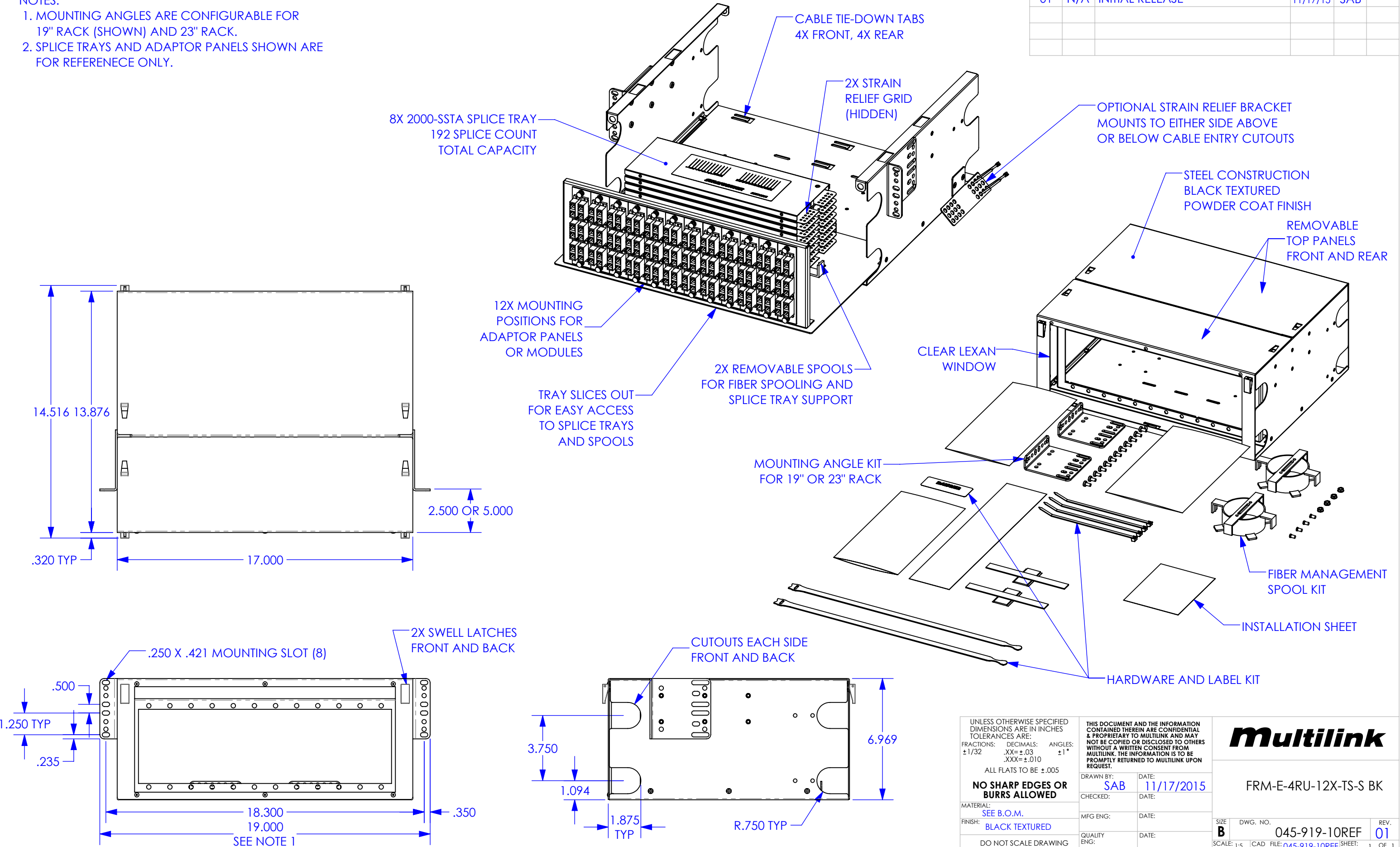


REV.	ECN #	DESCRIPTION OF CHANGE	DATE	BY	MFG ENG
01	N/A	INITIAL RELEASE	11/17/15	SAB	

NOTES:
 1. MOUNTING ANGLES ARE CONFIGURABLE FOR 19" RACK (SHOWN) AND 23" RACK.
 2. SPLICE TRAYS AND ADAPTOR PANELS SHOWN ARE FOR REFERENECE ONLY.



UNLESS OTHERWISE SPECIFIED DIMENSIONS ARE IN INCHES TOLERANCES ARE:
 FRACTIONS: ±1/32 DECIMALS: .XX=±.03 .XXX=±.010 ANGLES: ±1°
 ALL FLATS TO BE ±.005
NO SHARP EDGES OR BURRS ALLOWED
 MATERIAL: SEE B.O.M.
 FINISH: BLACK TEXTURED
 DO NOT SCALE DRAWING

THIS DOCUMENT AND THE INFORMATION CONTAINED THEREIN ARE CONFIDENTIAL & PROPRIETARY TO MULTILINK AND MAY NOT BE COPIED OR DISCLOSED TO OTHERS WITHOUT A WRITTEN CONSENT FROM MULTILINK. THE INFORMATION IS TO BE PROMPTLY RETURNED TO MULTILINK UPON REQUEST.

DRAWN BY: SAB DATE: 11/17/2015
 CHECKED: DATE:
 MFG ENG: DATE:
 QUALITY ENG: DATE:



FRM-E-4RU-12X-TS-S BK

SIZE B	DWG. NO. 045-919-10REF	REV. 01
SCALE: 1:5	CAD FILE: 045-919-10REF	SHEET: 1 OF 1